

Save ScienceFest

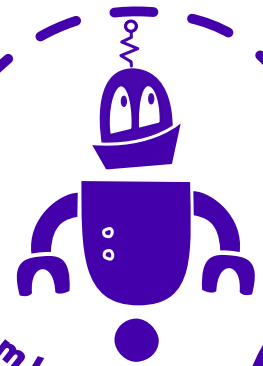
Spies have infiltrated Los Alamos and seek the secrets of our town! Fortunately, a scientist thought to lock them up for safekeeping - in a box with multiple locks, no less.

Unfortunately, she is now self-quarantining and can't help us release them again for ScienceFest. We have the box, but only someone who knows our town well will be able to solve the clues she left for us and unlock all 6 locks before it is too late!

Grab your clues and join the hunt. Some clues are simple, but others have multiple parts that will involve exploring parts of town. Put on your walking shoes and start searching! Each clue will yield one lock combination that can be tested on the boxes. Solve all 6 clues to open the box for a chance to win!

Do the Corona blues have you cooped up in your house, unable to get out to track down clues? You can still help! A set of online challenges are available as well.

Use these clues to do some online research from the safety of your own laboratory, and maybe learn something about our town and its history in the process.



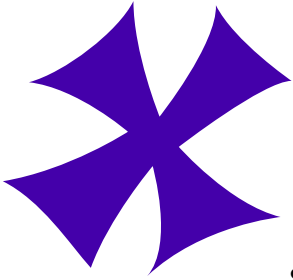
lasteamlab.com



LOS ALAMOS
SCIENCE
2020
Fe ST

GOES VIRTUAL

20/20: EYES ON THE FUTURE



The Details

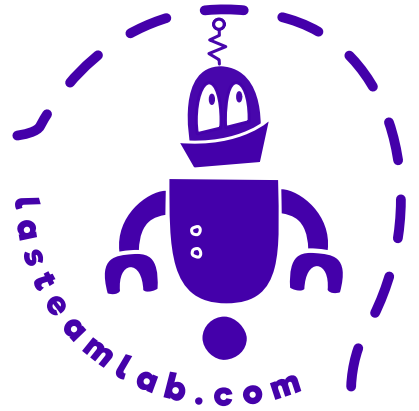
- **Solve the clues:** Locks can have letter, number, or colors in their combinations

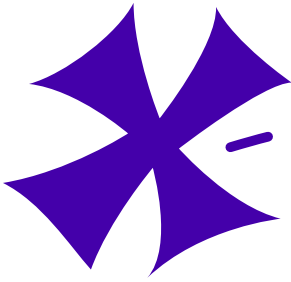
- **Try your combinations** out in front of projectY cowork from 2 - 5 on Wednesday, Thursday, or Friday or on Fuller Lodge Lawn from 11-2 on Saturday and Sunday.

- **Don't worry!** We take science seriously. Clorox wipes will be available for sanitizing the box between tries.
- **Online challenges** can be found at: <https://bit.ly/savesciencefest> - complete the first challenge to find links to two more (shopping and expert).
- **Questions?** Email Lis at lasteamlab@gmail.com

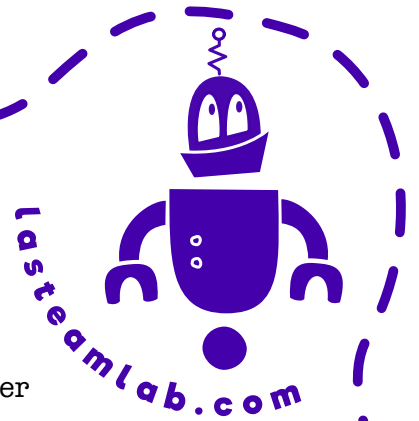
Prizes

- Complete the small box or first online challenge and be entered to win a BBC:micro:bit or free week robot rental (<https://lasteamlab.com/product-category/rentals/>) from Los Alamos STEAM Lab.
- Complete the online shopping challenge and be entered to win \$40 in Chamber Checks.
- Complete the large box or expert online challenge and be entered to win a Lego Beetle (<https://amzn.to/2ZC3Ns8>) or Tinkamo Play Kit (<https://amzn.to/3ix1102>) from Los Alamos STEAM Lab.
- Prizes must be picked up locally. They may not be shipped.





Box of small secrets -
six locks, six clues

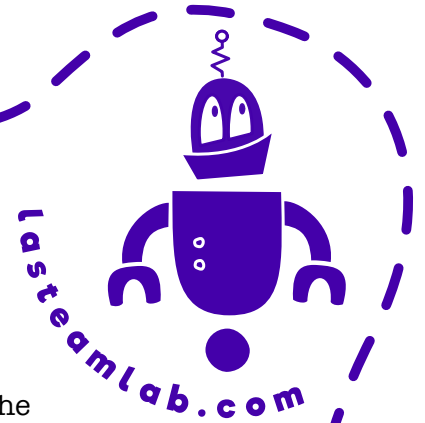


1. During World War II, there were victory gardens near Fuller Lodge. Now there's a victory garden on Bathtub Row. Find the sign in the garden. How many square feet were the WWII victory gardens here?
2. There used to be a large public clock on Central Avenue. The building is still there, and it's on the walking tour, but the clock is gone. What time is it in the photograph on the walking tour sign?
3. The sign at the trailhead of the park with a palindromic name shows four loops leading from it. If you hiked the longest three, then what does it say your total elevation gain would be in feet?
4. Los Alamos has a great spot for little people to go clubbing.
 - First digit: Cinderella's carriage is situated between two numbers, pick the smaller
 - Second digit: The number that goes through the wagon
 - Third digit: The number that has a beetle's song driving alongside it
 - Fourth digit: The number that is being shot at
5. An aqueous attraction, named after the Los Alamos Ranch School's founder, has three bronze statues. What is the name of the one installed the earliest?
6. An unlikely pair is cast in bronze. What's one of them holding in his left hand?





Box of large secrets -
6 locks, 6 clues



1. What kind of head was found in 1955 by Charlie Steen? The answer can be found behind the Romero cabin.
2. Which team provides us with the images in our otherworldly periodical? (remove the repeated letters)
3. UNM-LA has some great artwork.
 - First digit: The building that has hieroglyphics
 - Second digit: The building that has a snake.
 - Third digit: The building with the dedication plaque
4. You can find out about some early residents of Los Alamos on a trail named after a hunting method of the ancestral pueblos. Read about four brothers who were evicted when the government claimed the land. In what year did the brother with one arm receive his patent?
5. There is a park near the Mitchell Trailhead:
 - First ring: The color of the seat for the springy vehicle.
 - Second ring: The color of the truck from Santa Fe.
 - Third ring: The color of the swing.
 - Fourth ring: The color of the ninth truck.
 - Fifth ring: The bright color on the park's sign.
6. Women have always been fundamental to Los Alamos. Look around town to find:
 - First digit: The number of presidents MBC served
 - Second digit: The last digit in the human computer's ID
 - Third digit: The last digit of the birth year of the woman who studied plutonium inhalation
 - Fourth digit: The number of letters in the last name of the woman developing an HIV Vaccine

LOS ALAMOS
SCIENCE

2020
Fe ST

GOES VIRTUAL

20/20: EYES ON THE FUTURE